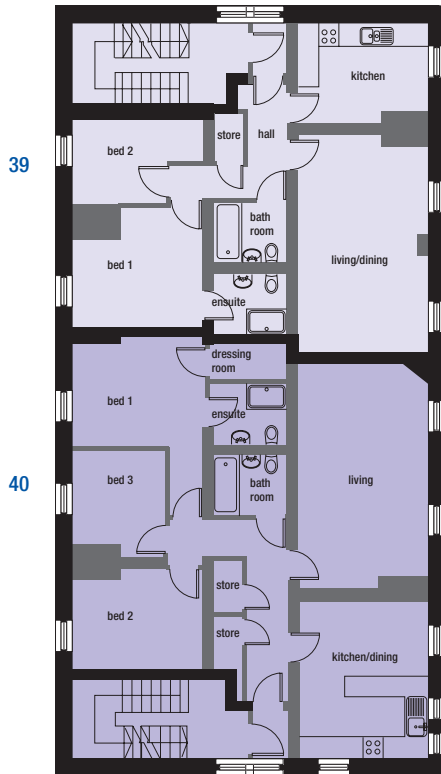


woodale house

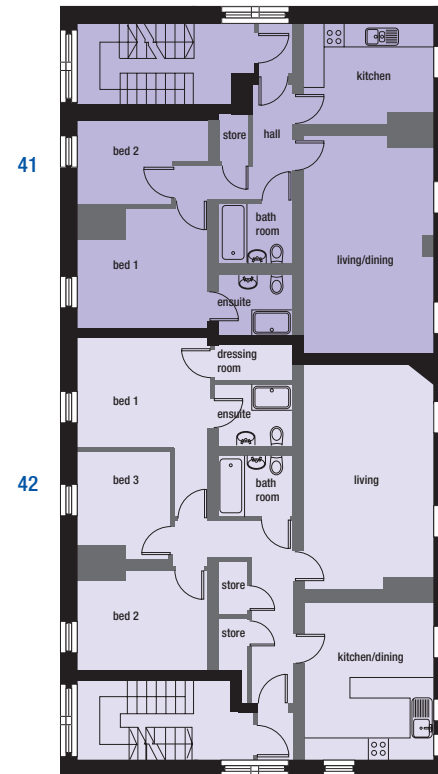


39

40

Plot 39	Metric	Imperial
Living/Dining	6.44 x 3.76	21'2" x 12'4"
Kitchen	2.88 x 3.80	9'5" x 12'6"
Bedroom 1	3.55 x 3.77	11'8" x 12'4"
Bedroom 2	2.57 x 3.80	8'5" x 12'6"

Plot 40	Metric	Imperial
Living	6.31 x 3.75	20'8" x 12'4"
Kitchen	2.39 x 3.75	7'10" x 12'4"
Dining	2.25 x 3.75	7'4" x 12'4"
Bedroom 1	3.25 x 3.89	10'7" x 12'9"
Bedroom 2	2.94 x 3.77	9'7" x 12'4"
Bedroom 3	3.16 x 2.69	10'4" x 8'10"

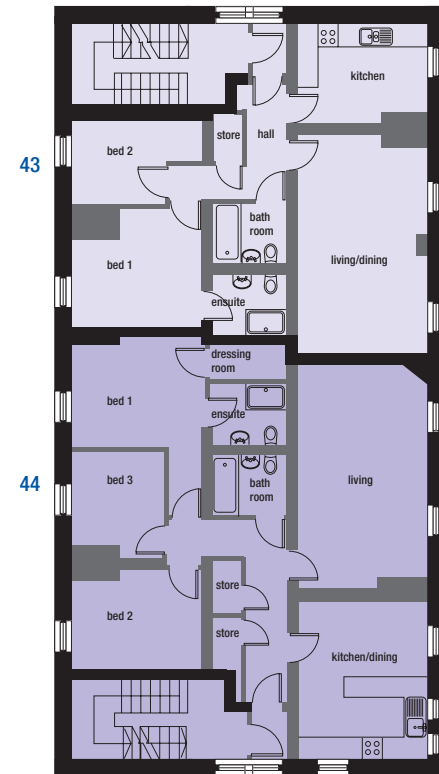


41

42

Plot 41	Metric	Imperial
Living/Dining	6.39 x 3.77	21'0" x 12'4"
Kitchen	2.86 x 3.78	9'5" x 12'5"
Bedroom 1	3.55 x 3.80	11'8" x 12'6"
Bedroom 2	2.56 x 3.84	8'5" x 12'7"

Plot 42	Metric	Imperial
Living/Dining	6.63 x 3.76	21'9" x 12'4"
Kitchen	2.40 x 3.76	7'10" x 12'4"
Dining	2.27 x 3.76	7'5" x 12'4"
Bedroom 1	3.20 x 3.90	10'6" x 12'10"
Bedroom 2	2.93 x 3.78	9'7" x 12'5"
Bedroom 3	2.90 x 2.70	9'6" x 8'10"



43

44

Plot 43	Metric	Imperial
Living/Dining	6.55 x 3.79	21'6" x 12'5"
Kitchen	3.06 x 3.77	10'0" x 12'4"
Bedroom 1	3.52 x 3.78	11'7" x 12'5"
Bedroom 2	2.52 x 3.88	8'3" x 12'9"

Plot 44	Metric	Imperial
Living	6.62 x 3.76	21'9" x 12'4"
Kitchen	2.39 x 3.76	7'10" x 12'4"
Dining	2.24 x 3.76	7'4" x 12'4"
Bedroom 1	3.18 x 3.90	10'5" x 12'10"
Bedroom 2	2.92 x 3.77	9'7" x 12'4"
Bedroom 3	2.92 x 2.69	9'7" x 8'10"

ground

first

second

Due to the shape of some of the room layouts - all measurements given throughout this brochure are maximum sizes unless otherwise stated. Dimensions stated may be subject to slight variations. Floor plans are for example only and do not represent exact final designs. Kitchen and bathroom layouts are indicative only. Please refer to the sales advisor for specific details.